

www.flatbooster.com

Roundcube Webmail Installation HANDBUCH

deutsche Auflage

Datum: 28.05.2015

Version: 1.0

Download: <http://flatbooster.com/support>

Wichtiger Hinweis:

Bevor Sie Roundcube Webmail installieren benötigen Sie noch einige Daten.

Die Benutzer und Servernamen auf den Screenshots sind nur Beispiele. Bitte verwenden Sie Ihre eigenen Zugangsdaten vom Kundenbereich unter:

"Hosting Verwaltung" - "Datenbanken" - "Datenbanken" : Daten für den Datenbankzugriff

"Hosting Verwaltung" - "FTP Manager" - "FTP Benutzer" : Daten für den FTP Zugriff

"Hosting Verwaltung" - "Email Manager" - "Email Postfächer" : Daten für den Email Zugriff

roundcube
open source webmail software

About News Screenshots **Download** Support Contribute

Download your version of Roundcube

PACKAGE	SIZE	MD5 CHECKSUM
1.1.1 - Dependent (*)	3.2 MB	148f9a68755a21abc776271922ba0c8
1.1.1 - Complete	4.6 MB	68f5a6ee29f31f7468767386df8af48
Framework: 1.1.1	Download now!	166c2d68e823af9a12c476d8e972f1c9
Old Version: 1.0.5	3.9 MB	268126b2c0d4889311c238f5a60c

* Dependent packages only contain sources which are licensed under the GPL, but they require some third-party packages to be installed along with Roundcube. All requirements are listed in the INSTALL instructions within the package file.

Other sources and downloads

- Roundcube can also be installed through auto installers like [softandson.com](#) or [iPanel](#).
- The [iPanel Roundcube Stack](#) provides a one-click installer for various platforms and cloud services.
- Various [Unix/Linux](#) distributions provide Roundcube via their package managers. Check your local package repository.
- For a complete list of releases and release notes please check out the [downloads page](#) at [roundcube.org](#).
- To get the bleeding edge development version check out the files directly from our [github repository](#).

Installation

- Instructions on how to download and [install Roundcube](#) can be found in our [Wiki](#).
- Extend the functionality of your Roundcube setup with various [plugins](#) from our [plugins repository](#).

Complete Email Server Packages with Roundcube

The [Kalab Groupware](#) Solution provides a complete email and groupware server pre-packaged for various Linux distributions with Roundcube sitting on top as its web client. It offers easy configurable LDAP address books, calendars, tasks, mobile synchronization and more. An enterprise version with professional support is available from [Kalab Systems](#).

[iRedMail](#) is another fully open source email server solution that lets you install a full-featured email server in a few minutes. It installs and configures the popular open source email components like Postfix, Dovecot, Amavis and - of course Roundcube - on major Linux and BSD distributions.

[Mail-in-a-Box](#) turns a fresh cloud computer into a fully equipped, working mail server. The setup provides Roundcube webmail and an IMAP/SMTP server for use with mobile devices and desktop mail software. It also includes contacts and calendar synchronization.

Donations are welcome

Roundcube webmail is free of charge but your donations help us to pay some hosting bills and motivate our developers to continue their great work.

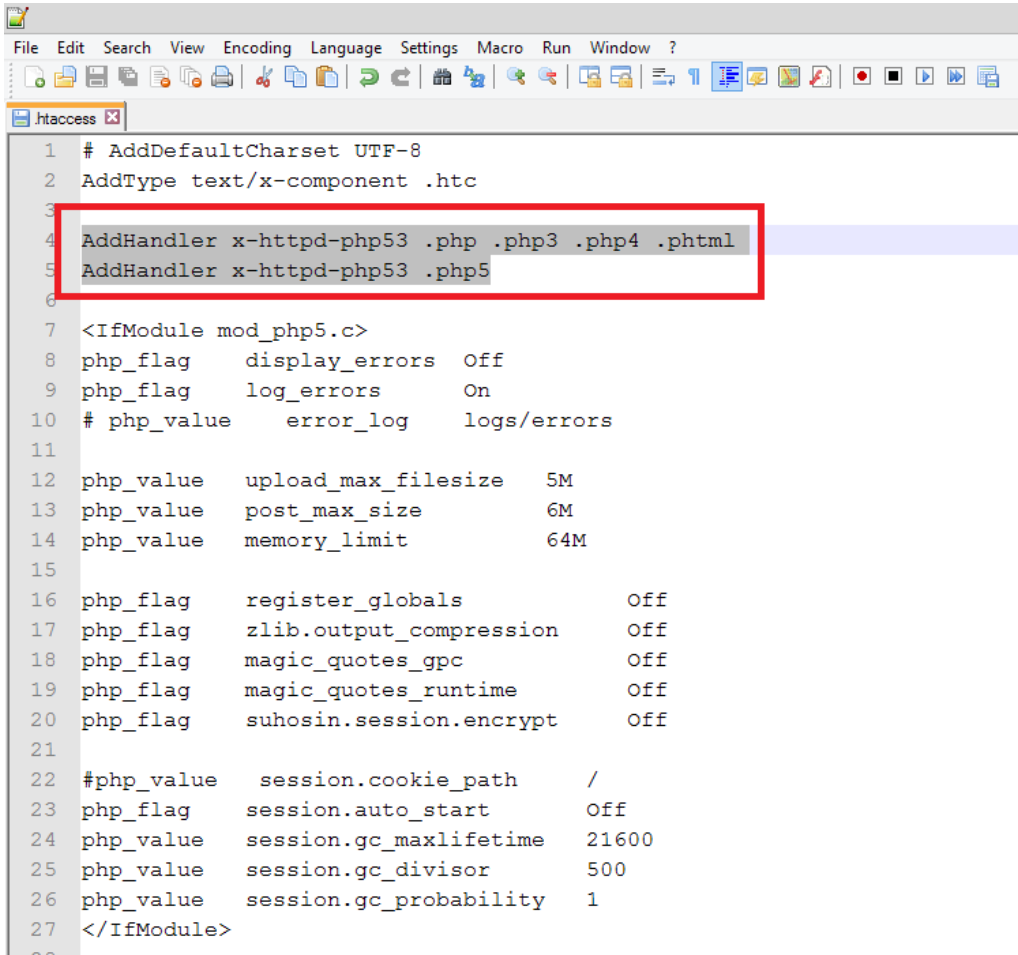
[Donate](#) [Join Us!](#)

<https://downloads.sourceforge.net/project/roundcubemail/roundcubemail/1.1.1/roundcubemail-1.1.1-complete.tar.gz>

Bitte laden sie sich unter <https://www.roundcube.net/download/> die aktuelle Version von Roundcube Webmail herunter.

Anschließend entpacken Sie das Archiv und erhalten einen Ordner mit dem Namen „roundcubemail-1.1.1“.

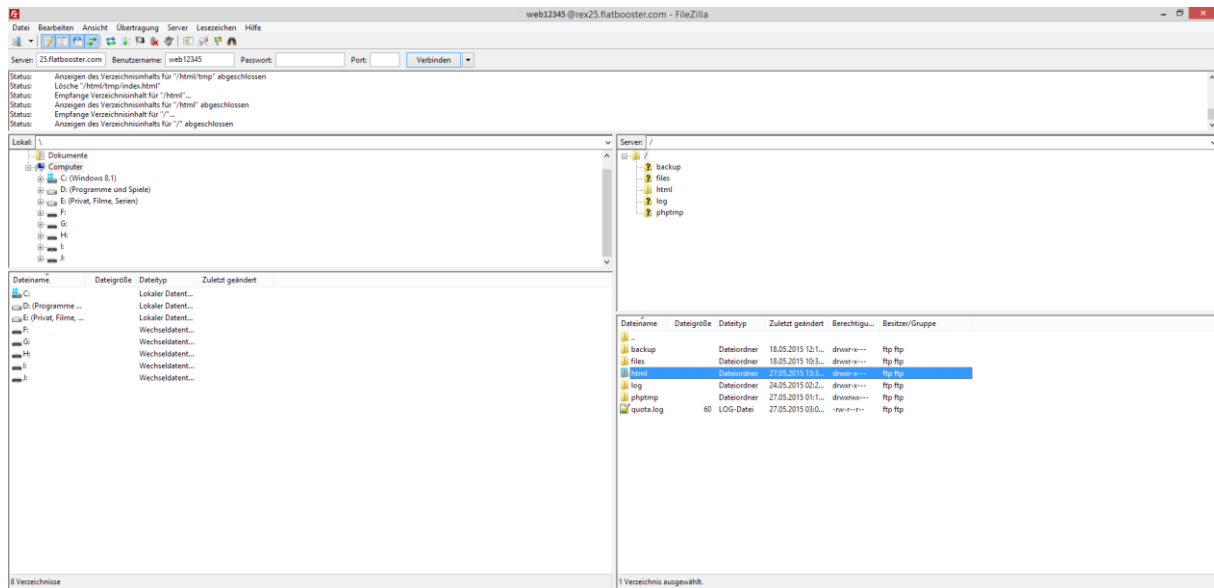
Bitte öffnen Sie den Ordner „roundcubemail-1.1.1“ und bearbeiten anschließend die „.htaccess“ Datei mit einem Texteditor.



```
1 # AddDefaultCharset UTF-8
2 AddType text/x-component .htc
3
4 AddHandler x-httpd-php53 .php .php3 .php4 .phtml
5 AddHandler x-httpd-php53 .php5
6
7 <IfModule mod_php5.c>
8 php_flag    display_errors    Off
9 php_flag    log_errors        On
10 # php_value error_log         logs/errors
11
12 php_value   upload_max_filesize 5M
13 php_value   post_max_size       6M
14 php_value   memory_limit        64M
15
16 php_flag    register_globals    Off
17 php_flag    zlib.output_compression Off
18 php_flag    magic_quotes_gpc    Off
19 php_flag    magic_quotes_runtime Off
20 php_flag    suhosin.session.encrypt Off
21
22 #php_value   session.cookie_path /
23 php_flag     session.auto_start  Off
24 php_value    session.gc_maxlifetime 21600
25 php_value    session.gc_divisor    500
26 php_value    session.gc_probability 1
27 </IfModule>
```

Bitte fügen Sie die folgenden Zeilen, wie abgebildet ein und **speichern** anschließend.

```
AddHandler x-httpd-php53 .php .php3 .php4 .phtml
AddHandler x-httpd-php53 .php5
```

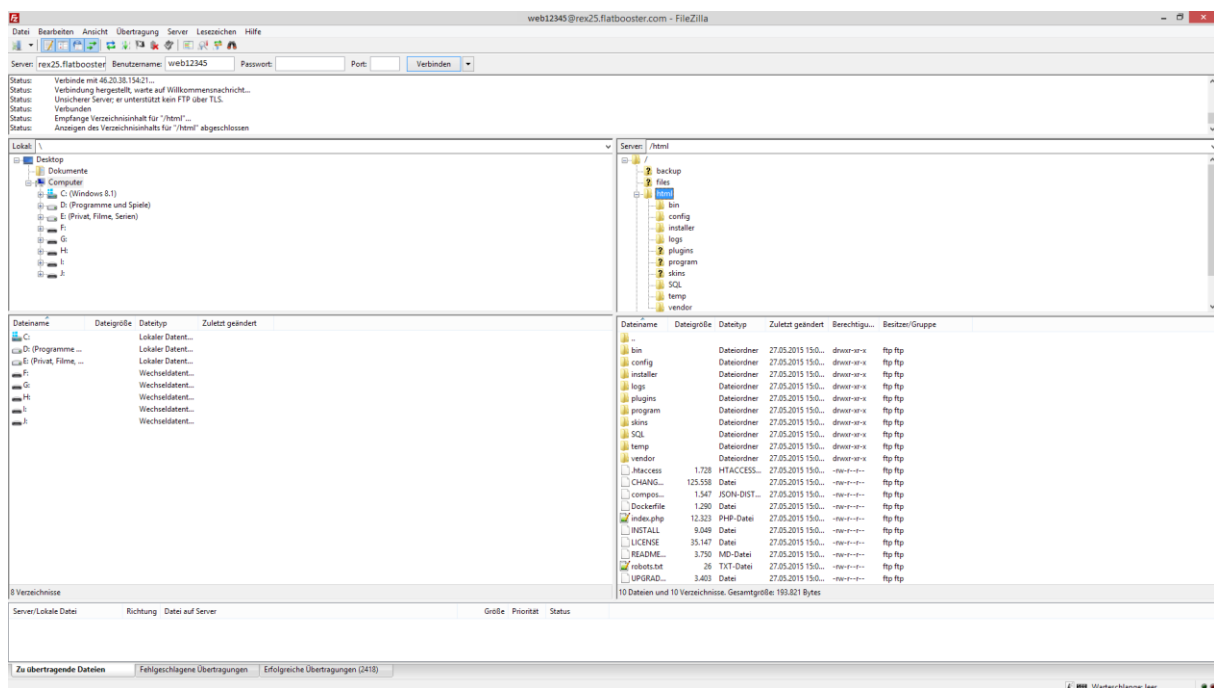


Nun öffnen Sie bitte ein FTP Programm wie z.B. „FileZilla“.

Im **Kundenbereich** unter **„Hosting Verwaltung“** - **„FTP Manager“** - **„FTP Benutzer“** finden Sie die Daten für den FTP Zugriff.

Verbinden Sie sich nun bitte mit Ihrem Account. Jetzt erhalten Sie eine Übersicht Ihres Webspace.

Gehen Sie nun weiter und öffnen den **„/html“** Ordner.



In den **„/html“** Ordner laden Sie nun **den Inhalt** Ihres entpackten **„roundcubemail-1.1.1“** Ordners hoch.

Bitte ändern Sie die Einstellungen nicht, außer Sie sind Webmaster und wissen was Sie tun.

display_errors	<input type="radio"/> On	<input checked="" type="radio"/> Off
register_globals	<input type="radio"/> On	<input checked="" type="radio"/> Off
safe_mode	<input type="radio"/> On	<input checked="" type="radio"/> Off
magic_quotes_gpc	<input type="radio"/> On	<input checked="" type="radio"/> Off
allow_url_fopen	<input checked="" type="radio"/> On	<input type="radio"/> Off
max_execution_time	<input checked="" type="radio"/> 90	<input type="radio"/> 30
memory_limit	<input checked="" type="radio"/> 128M	<input type="radio"/> 32M

Brauchen Sie mehr Performance?

	Web Plus	Web Profi	Web Ultra
memory_limit	64M	128M	256M
max_execution_time	60s	90s	200s

[Hosting Tarif erweitern](#)

Nun nehmen Sie noch einige Einstellungen vor.

Hierzu können Sie im **Kundebereich** unter „**Hosting Verwaltung**“ – „**Tools**“ – „**php.ini Editor**“, die notwendigen Einstellungen vornehmen.

Nachdem Sie nun alle Vorkehrungen getroffen haben, können wir mit der Einrichtung von Roundcube Webmail beginnen.

Checking PHP version

Version: **OK** (PHP 5.3.28 detected)

Checking PHP extensions

The following modules/extensions are *required* to run Roundcube:

PCRE: **OK**
DOM: **OK**
Session: **OK**
XML: **OK**
JSON: **OK**
PDO: **OK**

The next couple of extensions are *optional* and recommended to get the best performance:

FileInfo: **OK**
Libiconv: **OK**
Multibyte: **OK**
OpenSSL: **OK**
Mcrypt: **OK**
Intl: **NOT AVAILABLE** (See <http://www.php.net/manual/en/book.intl.php>)
Exif: **OK**
LDAP: **NOT AVAILABLE** (See <http://www.php.net/manual/en/book.ldap.php>)

Checking available databases

Check which of the supported extensions are installed. At least one of them is required.

MySQL: **OK**
PostgreSQL: **NOT AVAILABLE** (See <http://www.php.net/manual/en/ref.pdo-pgsql.php>)
SQLite: **OK**
SQLite (v2): **NOT AVAILABLE** (See <http://www.php.net/manual/en/ref.pdo-sqlite.php>)
SQL Server (SQLSRV): **NOT AVAILABLE** (See <http://www.php.net/manual/en/ref.pdo-sqlsrv.php>)
SQL Server (DBLIB): **NOT AVAILABLE** (See <http://www.php.net/manual/en/ref.pdo-dblib.php>)
Oracle: **NOT AVAILABLE** (See <http://www.php.net/manual/en/book.oci8.php>)

Check for required 3rd party libs

This also checks if the include path is set correctly.

PEAR: **OK**
Auth_SASL: **OK**
Net_SMTP: **OK**
Net_IDNA2: **OK**
Mail_mime: **OK**
Mail_mimeDecode: **OK**
Net_LDAP3: **OK**

Checking php.ini/.htaccess settings

The following settings are *required* to run Roundcube:

file_uploads: **OK**
session.auto_start: **OK**
mbstring.func_overload: **OK**
suhosin.session.encrypt: **OK**
magic_quotes_runtime: **OK**
magic_quotes_sybase: **OK**

The following settings are *optional* and recommended:

allow_url_fopen: **OK**
date.timezone: **NOT OK** (not set)
register_globals: **OK**

NEXT

Öffnen Sie nun bitte Ihren Browser und öffnen <http://ihredomain.de/installer/> . Dort öffnet sich nun die Konfiguration von Roundcube Webmail. Wenn Sie alle Daten zur Hand haben klicken Sie nun auf

“NEXT“.

Database setup

db_dsnw

Database settings for read/write operations:

MySQL	Database type
localhost	Database server (omit for sqlite)
usr_web12345_1	Database name (use absolute path and filename for sqlite)
web12345	Database user name (needs write permissions)(omit for sqlite)
*****	Database password (omit for sqlite)

db_prefix

Optional prefix that will be added to database object names (tables and sequences).

Bitte scrollen Sie in den Abschnitt „Database Setup“ und geben nun Ihre Datenbank Daten ein.

Im **Kundenbereich** unter **„Hosting Verwaltung“ - „Datenbanken“ - „Datenbanken“**, finden Sie die Daten für den Datenbankzugriff.

IMAP Settings

default_host

The IMAP host(s) chosen to perform the log-in
rex25.flatbooster.com

add

Leave blank to show a textbox at login. To use SSL/IMAPS connection, type ssl://hostname

default_port

143

TCP port used for IMAP connections

username_domain

Automatically add this domain to user names for login
Only for IMAP servers that require full e-mail addresses for login

auto_create_user

Automatically create a new Roundcube user when log-in the first time
A user is authenticated by the IMAP server but it requires a local record to store settings and contacts. With this option enabled a new user record will automatically be created once the IMAP login succeeds.
If this option is disabled, the login only succeeds if there's a matching user-record in the local Roundcube database what means that you have to create those records manually or disable this option after the first login.

sent_mbox

Sent

Store sent messages in this folder
Leave blank if sent messages should not be stored. Note: folder must include namespace prefix if any.

trash_mbox

Trash

Move messages to this folder when deleting them
Leave blank if they should be deleted directly. Note: folder must include namespace prefix if any.

drafts_mbox

Drafts

Store draft messages in this folder
Leave blank if they should not be stored. Note: folder must include namespace prefix if any.

junk_mbox

Junk

Store spam messages in this folder
Note: folder must include namespace prefix if any.

Anschließend bearbeiten Sie in den IMAP Settings den „default_host“.

Im **Kundenbereich** unter **„Hosting Verwaltung“ - „Email Manager“ - „Email Postfächer“** finden Sie die Daten für den Email Zugriff.

SMTP Settings

smtp_server
rex25.flatbooster.com
Use this host for sending mails
To use SSL connection, set ssl://smtp.host.com. If left blank, the PHP mail() function is used

smtp_port
25
SMTP port (default is 25; 465 for SSL; 587 for submission)

smtp_user/smtp_pass
web12345p1
SMTP username and password (if required)

Use the current IMAP username and password for SMTP authentication

smtp_log
 Log sent messages in {log_dir}/sendmail or to syslog.

Display settings & user prefs

language *
de_DE
The default locale setting. This also defines the language of the login screen. Leave it empty to auto-detect the user agent language.
Enter a [RFC1766](#) formatted language name. Examples: en_US, de_DE, de_CH, fr_FR, pt_BR

Jetzt bearbeiten Sie den „smtp_server“ und geben anschließend Ihre Zugangsdaten unter „smtp_user/smtp_pass“ ein.

Im **Kundenbereich** unter **„Hosting Verwaltung“ - „Email Manager“ - „Email Postfächer“** finden Sie die Daten für den Email Zugriff.

Tipp:

Bei den Display Settings können Sie noch die Sprache auf Deutsch stellen, wenn Sie wie abgebildet den Zusatz „de_DE“ eingeben.


Password Change for Roundcube. Plugin adds a possibility to change user password using many methods (drivers) via Settings/Password tab.

- redundant_attachments**
This plugin provides a redundant storage for temporary uploaded attachment files. They are stored in both the database backend as well as on the local file system. It provides also memcache store as a fallback.
- show_additional_headers**
Proof-of-concept plugin which will fetch additional headers and display them in the message view.
- sqd/rre/mail_usercopy**
Copy a new users identity and settings from a nearby Squirrelmail installation
- subscriptions_option**
A plugin which can enable or disable the use of imap subscriptions. It includes a toggle on the settings page under "Server Settings". The preference can also be locked.
- userInfo**
Sample plugin that adds a new tab to the settings section to display some information about the current user.
- vcard_attachments**
This plugin detects vCard attachments/bodies and shows a button(s) to add them to address book
- virtuser_file**
Plugin adds possibility to resolve user email/login according to lookup tables in files.
- virtuser_query**
Plugin adds possibility to resolve user email/login according to lookup tables in SQL database.
- zipdownload**
Adds an option to download all attachments to a message in one zip file, when a message has multiple attachments. Also allows the download of a selection of messages in one zip file. Supports mbox and maildir format.

Please consider checking dependencies of enabled plugins

CREATE CONFIG

Scrollen Sie nun ganz nach unten und klicken Sie anschließend auf „CREATE CONFIG“.



roundcube
open source webmail software

Roundcube Webmail Installer

1. Check environment
- 2. Create config**
3. Test config

The config file was saved successfully into `RCMAIL_CONFIG_DIR` directory of your Roundcube installation.

Of course there are more options to configure. Have a look at the `defaults.inc.php` file or visit [Howto Config](#) to find out.

CONTINUE

Klicken Sie nun bitte auf „CONTINUE“.

Roundcube Webmail Installer

1. Check environment 2. Create config 3. **Test config**

Check config file

defaults.inc.php: **OK**
config.inc.php: **OK**

Check if directories are writable

Roundcube may need to write/save files into these directories

/var/www/ web12345 /html/temp/: **OK**
/var/www/ web12345 /html/logs/: **OK**

Check DB config

DSN (write): **OK**
DB Schema: **NOT OK** (Database not initialized)

Test filetype detection

Fileinfo/mime_content_type configuration: **OK**
Mimetype to file extension mapping: **NOT OK**

Please set a valid path to your webserver's mime.types file to the `mime_types` config option.
If you can't find such a file, download it from svn.apache.org.

Test SMTP config

Server: rex25.flatbooster.com
Port: 25
User: web12345p1
Password: *****

Sender

Recipient

Test IMAP config

Server

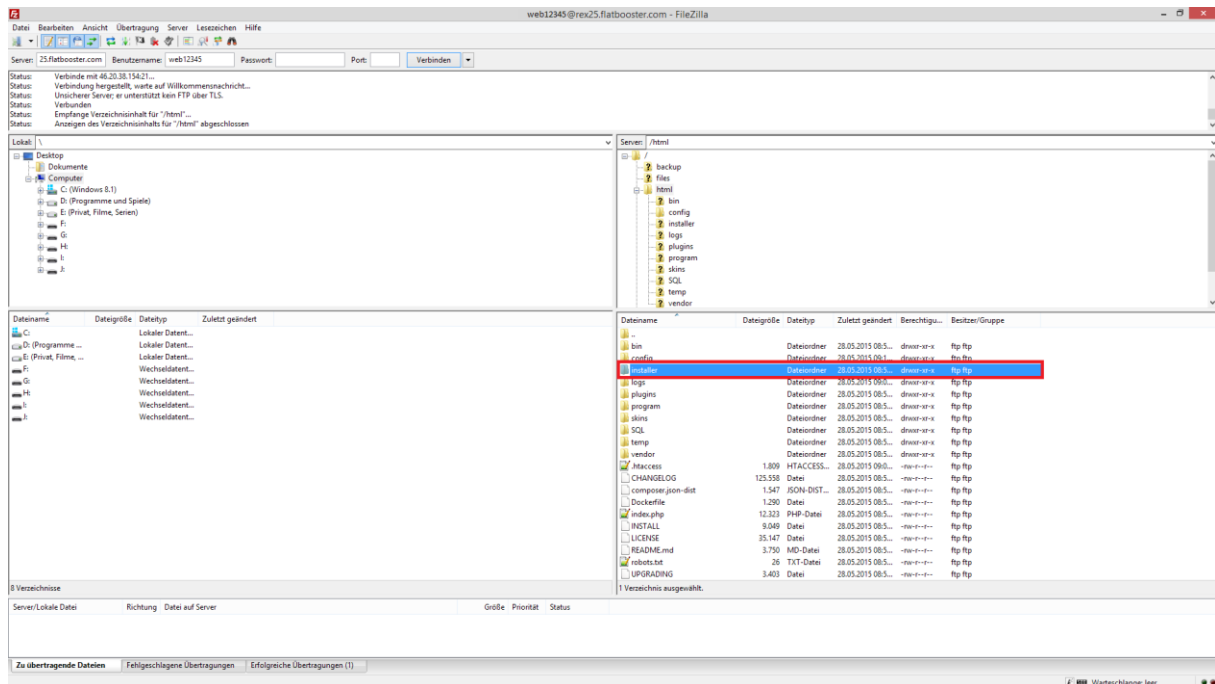
Port

Username

Password

Klicken Sie nun bitte auf „Initialize“, damit Roundcube Webmail, die Datenbanktabellen erstellen kann.

Hier sind wir nun fertig und müssen noch einen Ordner in Ihrem Webspace löschen.



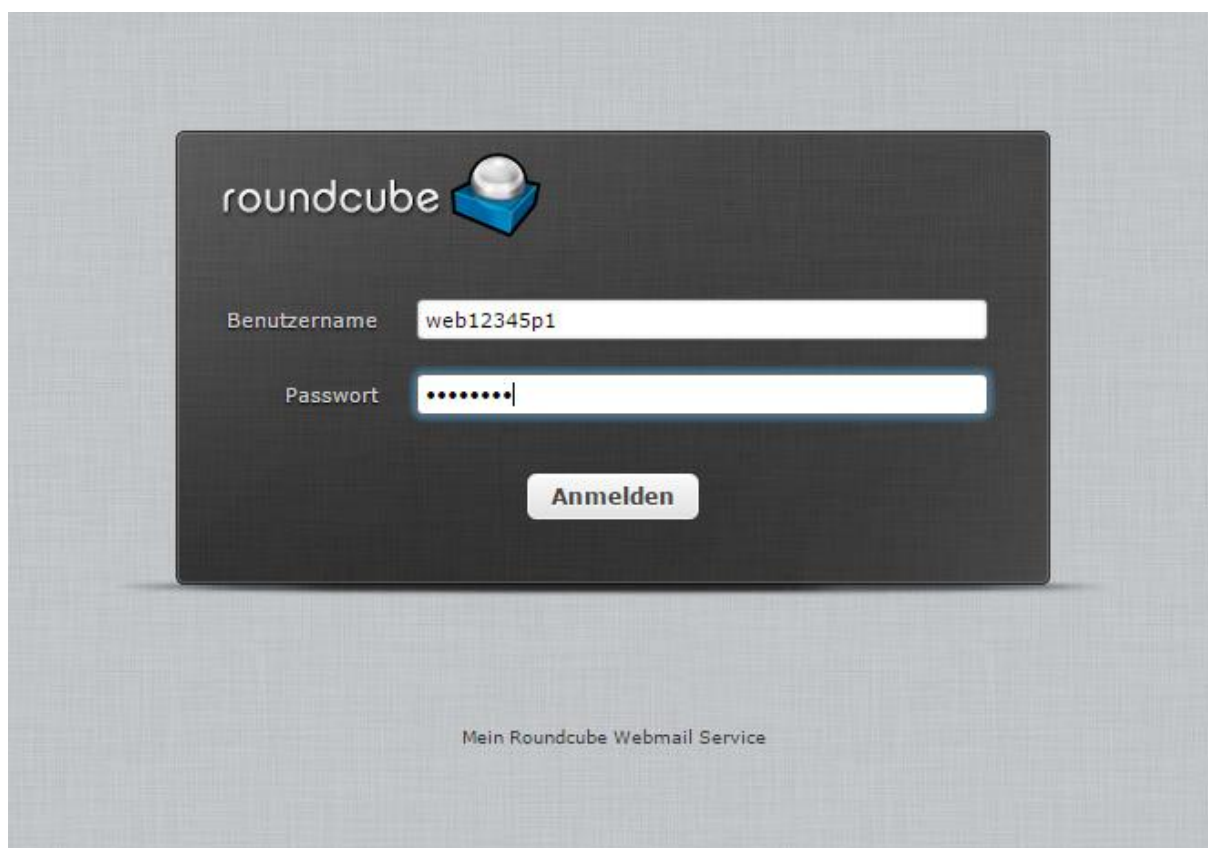
Dazu öffnen Sie bitte ein FTP Programm wie z.B. „Filezilla“.

Im **Kundenbereich** unter **„Hosting Verwaltung“** - **„FTP Manager“** - **„FTP Benutzer“** finden Sie die Daten für den FTP Zugriff.

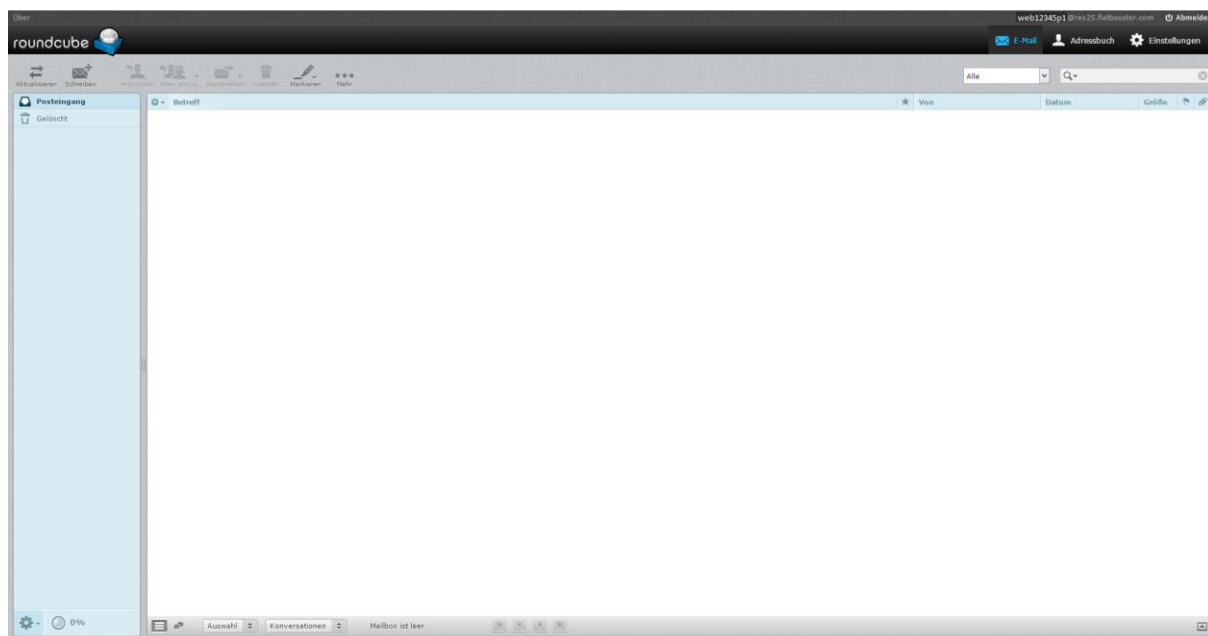
Verbinden Sie sich nun bitte mit Ihrem Account. Jetzt erhalten Sie eine Übersicht Ihres Webspace.

Gehen Sie nun weiter und öffnen den „/html“ Ordner.

Darin befindet sich der Ordner „Installer“, den Sie jetzt bitte **löschen**.



Bitte öffnen Sie nun Ihre Domain „<http://www.ihredomain.de>“ und geben hier Ihre Anmeldedaten ein und klicken auf „Anmelden“.



GRATULATION.

Nun ist die Installation komplett abgeschlossen und Sie können Ihren Webmail Service ganz nach Ihren Bedürfnissen anpassen.